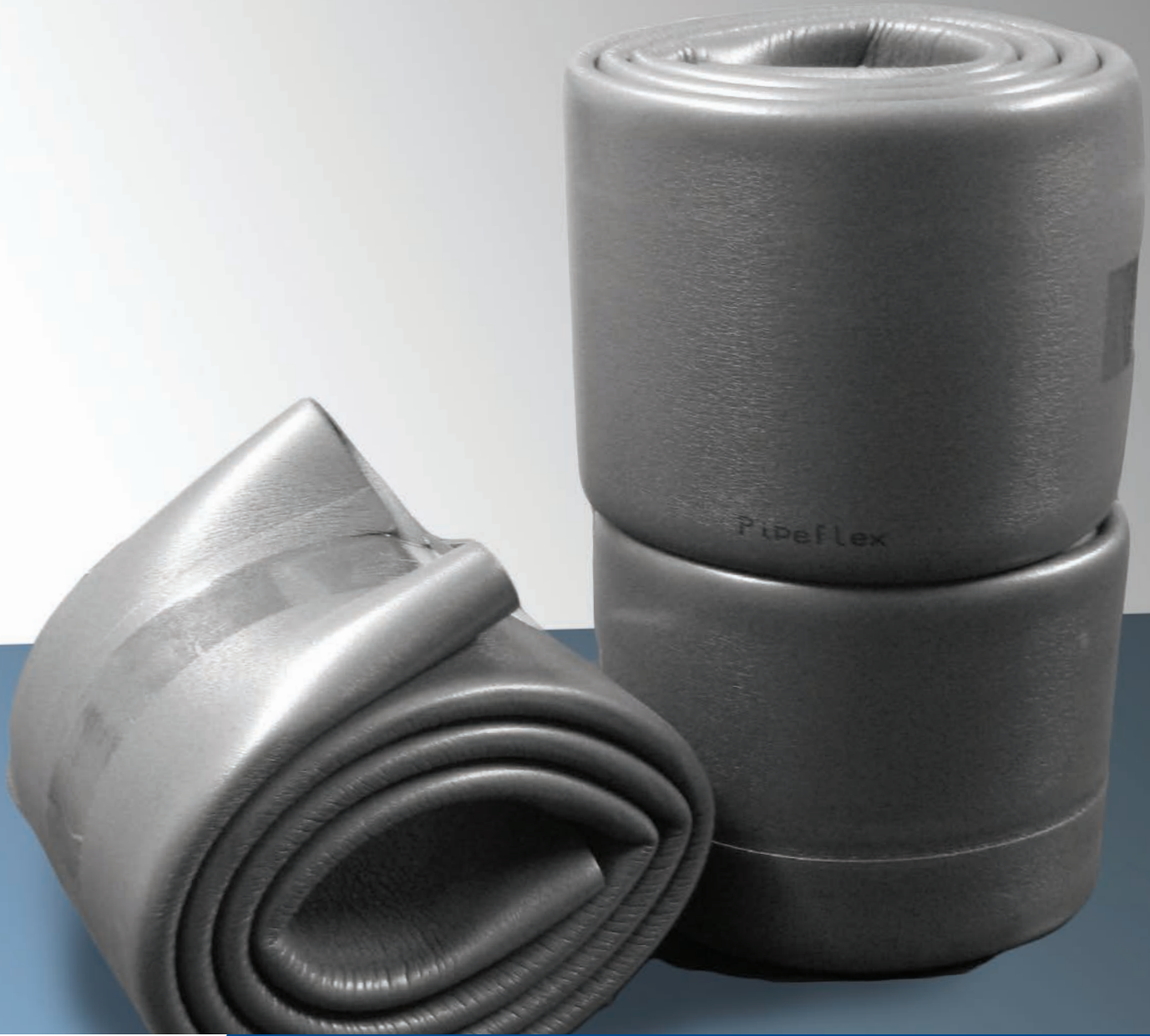


SOF-FORM[®] Pipe

EXPANSION JOINT LAGGING SLEEVE



SOF-FORM[®] Pipe is the convenient way of lagging PVC pipes, making it quick and easy to install single handedly. Available in a variety of pipe ID's to suit pipe of up to 160mm in diameter.

SEKISUI

FOAM
INTERNATIONAL
Global Foam Solutions

PHYSICALLY
CROSSLINKED
SEKISUI TECHNOLOGY

SOF-FORM® Pipe

EXPANSION JOINT LAGGING SLEEVE

Profiles

SOF-FORM® Pipe is available in profiles from:

- 35mm ID to 160mm ID with a wall thickness of 10mm
- The 10mm wall pipe is available in roll lengths from 2m to 100m
- Special ID's available on request – min. order quantities apply

Stock Lines

- 114id x 10mm wall x 2m
- 114id x 40mm wall x 2m
- 120id x 10mm wall x 6m
- 120id x 40mm wall x 2m

Physical Properties

SOF-FORM® Pipe is made using a closed cell, physical crosslinked, polyolefin foam with an outer skin. The foam is free of heavy metals, plasticisers and CFCs and is also available in flat form in thicknesses of 3mm to 50mm in laminated layers. For tubular form products we can produce material to form a wide variety of tube ids and wall thicknesses.

| Property | Typical Value | Test Method |
|---------------------------|--|-------------|
| Density | 22 kg/m ³ (nominal) | Internal |
| Tensile Strength | 3.1 kg/cm ² (longitudinal) 1.7 kg/cm ² (crosswise) | JIS K6767 |
| Elongation | 210% (longitudinal) 122% (crosswise) | JIS K6767 |
| Tear Strength | 1.8 kg/cm (longitudinal) 1.1 kg/cm (crosswise) | JIS K6767 |
| Compression Strength | 0.29 kg/cm ² @ 25% deflection 0.74 kg/cm ² @ 50% deflection | Internal |
| Compression Set | 9.1% @ 25% deflection 30.0% @ 50% deflection | JIS K6767 |
| Dimensional Change Heat | -1.78% (longitudinal) -0.80% (crosswise) | 70°C, 22h |
| Water Absorption | 0.14 mg/cm ² | JIS K6767 |
| Water Vapour Permeability | 5.6 g/m ² , 24h | JIS Z0208 |
| Working Temperature Range | -80 / +100°C | Internal |

Product Installation



SOF-FORM® Pipe is extremely easy to install saving time and manpower, for when isolation is required for pipe or rebar installations.

1. Unroll the coil of SOF-FORM® Pipe.
2. Fit one end over the pipe and pull the sleeve onto the pipe.
3. An expansion joint around the pipe in 5 seconds!



This information on Sekisui Foam Australia foams is presented to the best of our knowledge. All product data is based on average values and is for guidance only. As these products are subject to constant research and development, we reserve the right to update the contents without notice. Date of Publication: February 2015.

Recommendations as to methods of post fabrication, application and use of Sekisui Foam Australia foams are based on our experience and knowledge of the characteristics of our products and are given in good faith. As producer of the material we have no control over the application of Sekisui Foam Australia foams and no legal responsibility is accepted for such recommendations. In particular, no responsibility is accepted by us for any system in which Sekisui Foam Australia foams are utilised or for any application. Softlon and Thermobreak - Registered trademarks of Sekisui Foam Australia.

SEKISUI | **FOAM**
INTERNATIONAL
Global Foam Solutions



Sekisui Foam Australia Head Office

1-5 Parraweena Rd, PO Box 2898,
Taren Point NSW 2229 Australia
Tel: +61 2 9525 9880
Fax: +61 2 9525 8004
Email: info@sekisuifoam.com.au
Web: www.sekisuifoam.com.au

Queensland Branch

15/853 Nudgee Rd, PO Box 448,
Northgate QLD 4013 Australia
Tel: +61 7 3267 7100
Fax: +61 7 3267 7166
Email: info@sekisuifoam.com.au
Web: www.sekisuifoam.com.au